



Get a free 2-year warranty



# PISTON COMPRESSOR PCAP 6 SH 6

IN GOOD HANDS  
INSTRUCTIONS MANUAL ORIGINAL

GB / SP / DE / PT





## WHO ARE WE?

Peugeot Professional Tools was born out of several obvious reasons.

The first was to combine the know-how of Peugeot, which has mastered the art of cutting since 1810, with the expertise of Tivoly, a metalworker since 1917, in order to create a wide range of machines and tools for construction and maintenance professionals.

It was also an obvious choice to serve craftsmen and small businesses driven by strong family and heritage values.

For these professionals, Peugeot Outils Professionnels offers machines and tools designed specifically for their needs. These tools are reliable, durable, and repairable in France and in countries under distribution agreements, by local industrial and family partners.

Trusted equipment with a longer warranty, logistics, and

French after-sales service. The assurance of dealing with the people who assembled these tools and know every part that goes into them inside out.

From exceptional projects to everyday jobs, these tools are designed to withstand the most demanding conditions and stand the test of time.

Peugeot Professional Tools was born from one obvious fact: that our tools are in good hands. The hands of those who work behind the scenes and give their best to satisfy their customers.

Since 1810, much has changed, but the hands have remained the same. The hands of enthusiasts, artisans, dedicated technicians and installers, workers proud of themselves and their achievements.

Peugeot Professional Tools, tools in good hands.

### THANK YOU FOR YOUR PURCHASE.

We are delighted that you have chosen Peugeot Outils Professional. Each one has been designed to offer you an exceptional experience, and we hope you will enjoy using it as much as we have enjoyed creating for you.

Your trust is essential to us, and we are delighted to accompany you every step of the way in your experience with the Peugeot Outils Professionnels brand.

**Your purchase comes with a warranty. 2 years, extendable by 2 years upon request.**

**To benefit, register at [www.peugeot-outils-pro.com](http://www.peugeot-outils-pro.com)**

If you have any questions or need assistance, our team is at your disposal to offer you the best possible service.

For all inquiries regarding our pre-sale service, after-sales service, please call the number + 33(O) 4. 79. B9. 59. 00

Thank you for choosing Peugeot Outils Professional. Your satisfaction is our priority. Your satisfaction is our priority.



# SILENT AIR COMPRESSOR MONOBLOCK TWO-CYLINDER OIL- FREE



## PCAP6SH6

Ref.: PPC00100011

### Equipment:

- Micron pressure regulator: with quick-connect outlet
- 12 bar pressure gauge: tank pressure indicator
- Pressure gauge switch
- Check valve, safety valve, drain valve
- Power cord: 3 x 1 mm<sup>2</sup> x length 1.6 m
- Carrying handle
- 4 shock-absorbing pads

### Features:

Intake flow	6.2 m <sup>3</sup> /h, or 105 l/min
Output flow	3.6 m <sup>3</sup> /h, or 60 l/min
Motor	0.75 HP Single-phase
Tank	6 liters
Pressure	8 bar max
Dimensions in cm	46 x 19.5 x 47
Weight	13.8 kg
Noise level	55 dB (A)

You have just purchased a Peugeot Outils Professionnels air compressor and we thank you for your trust.

To get the most out of your compressor safely, please read this manual carefully before installation, use, and any maintenance.

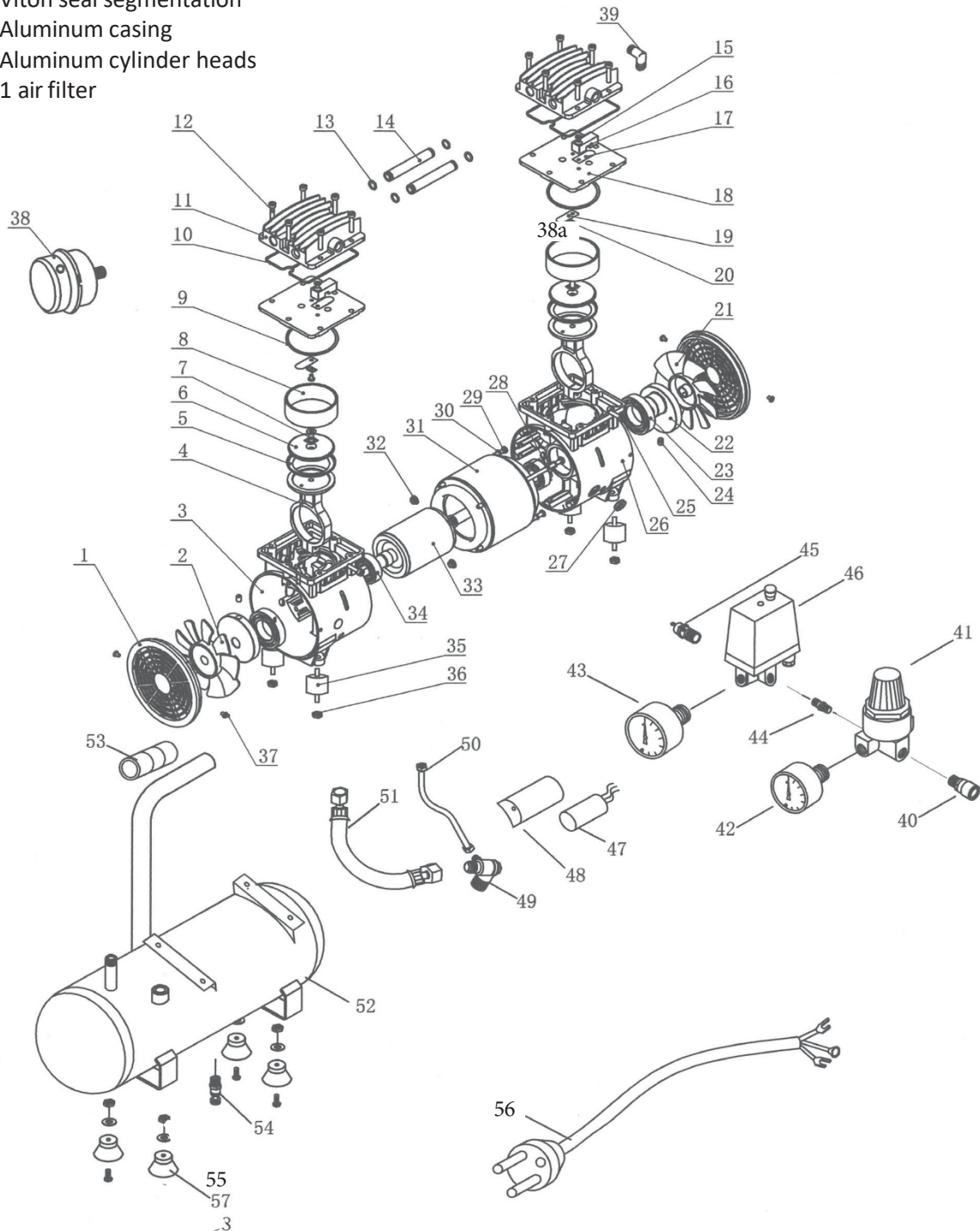
## DESCRIPTION: Compression unit

### Unit design:

Monobloc, twin-cylinder, single-stage, oil-free, low-speed unit

Long-life components:

- Double connecting rod on bearing
- High-efficiency valve plate
- Viton seal segmentation
- Aluminum casing
- Aluminum cylinder heads
- 1 air filter



<b>Reference</b>	<b>Designation</b>	<b>Quantity</b>	<b>Reference</b>
1	Group grid	2	25,160,300
2	Left fan	1	25 160 302
3	Left casing	1	25 160 301
4	Connecting rod	2	25,160,303
5	Teflon gasket	2	25 160 304
6	Piston	2	25,160,305
7	Piston screw	2	25 160 306
8	Cylinder	2	25,160,307
9	Lower valve plate gasket	2	25 160 308
10	Cylinder head gasket	2	25 160 309
11	Cylinder head	2	25,160,310
12	Cylinder head screws	12	25 160 311
13	Inter-cylinder head gasket	4	25 160 312
14	Cylinder head connection piping	2	25 160 313
15 to 20	Complete valve plate	2	25 160 314
21	Right fan	1	25 160 315
22	Crankshaft	2	25 160 316
23	Bearing 6006-2Z	2	25 160 317
24	Crankshaft bolt	2	
25	Connecting rod bolt	2	25 160 319
26	Right crankcase	1	25 160 320
27	Stuffing box	1	25,160,321
28	Screw	4	
29	Screw	4	
30	Washer	4	
31	Stator	1	25 160 325
32	Nut	4	
33	Rotor	1	25 160 327
34	Bearing 6203-2Z	1	25 160 328
35	Silent block	4	25 160 329
36	Nut	4	25 160 330
37	Screw Flange assembly	4	25 160 331
38a	1/4" M air filter	1	24 164 002
38b	Air filter cartridge	1	24 164 004
39	Elbow	1	
40	Quick connector 1/4M (RAC 555)	1	29 380 220
41	Regulator	1	
42	Regulator pressure gauge Ø 40 mm (0-12 bar)	1	25 150 723
43	Tank pressure gauge Ø 50 mm (0-12 bar)	1	25 150 574
44	1/4 M-M nipple	1	26,360,100
45	Safety valve 1/4 M 8 bar CE	1	25 150 569
46	PM pressure switch	1	25 150 722
47	20 µf motor capacitor	1	25,160,334
48	Capacitor protection	1	25 160 335
49	Check valve	1	25 160 336
50	Empty hose	1	25 160 337
51	Hose connecting unit/tank	1	25 160 338
52	6-liter tank - 8 bar	1	
53	Rubber handle	1	25 160 340
54	1/4 M drain valve	1	24 350 055
55	Shock absorber pad + screws	4	25 160 341
56	Power cable 3 x 1 mm <sup>2</sup> , length 1.6 m	1	
	Complete Silent unit 6.2 m <sup>3</sup> /h	1	24 136 002



## IMPORTANT PRELIMINARY INFORMATION

The legal and contractual warranty for Peugeot Professional Tools products is subject to strict compliance with this user manual.



Before using any pneumatic tool, make sure that your compressor is powerful enough for the job. Using tools whose air consumption exceeds 50% of your compressor's air production capacity will cause premature wear and tear on the compressor.

Like any pressurized equipment, a compressor must be used with caution, following all start-up, operating, and maintenance instructions, as well as the safety instructions and warnings contained in this manual. It is essential to read this manual carefully before assembly and installation, use, maintenance, and in the event of minor malfunctions. Keep this manual in a safe place so that you can refer to it at any time. By identifying potentially dangerous situations in good time and following the appropriate safety instructions, the risk of accidents will be considerably reduced.

Frequent purging of the air compressor tank is necessary to limit corrosion of the tank, which could weaken it.

This equipment is intended for compressing air only, and no other gas or fluid. Never use the compressor in any way other than that specifically recommended, unless you have first ensured that the intended use will not be dangerous to yourself or others.



Modifying the design of the compressor or performing any work on the compressor beyond the operations authorized in this manual is prohibited. In such cases, the services of an authorized Peugeot Outils Professionnels service center are required.



This product must be recycled separately from other waste. At the end of the device's life, take it to an approved Eco-Systèmes center (waste collection center, etc.) for recycling of its materials. It is therefore your responsibility to recycle this electronic equipment waste by taking it to a designated collection point for recycling electrical and electronic equipment. The separate collection and recycling of your waste equipment at the time of disposal helps to protect natural resources and ensure recycling in a way that protects human health and the environment. For more information on recycling points for your waste equipment, please contact your local recycling service or the retailer where you originally purchased the product.

Collection point at [www.quefairedemesdechets.fr](http://www.quefairedemesdechets.fr)



## RECEPTION - INSTALLATION

### Compressor environment:

The compressor must be used in a clean (dust-free) and well-ventilated environment, away from acid and flammable gases. It must be protected from water (rain, water jets, etc.).

The operating ambient temperature is between 0 and 35°C. The humidity level is up to 75%. Keep the compressor in a horizontal position, in a ventilated area that facilitates the intake of air to be compressed, and at least 50 cm from a wall.

### Installation:

The compressor must be placed on a stable support to limit vibrations and prevent it from falling: avoid rigidly fixing it to the floor, as this would prevent vibrations from dispersing and could cause breakage.

If the compressor is mobile (with wheels) and delivered on a special transport pallet or in a cardboard box, it must be unpacked (and/or removed from the pallet) and assembled with its wheels (and skids, if supplied).

The compressor must be placed at least 3 meters away from the work area to avoid the risk of suctioning in air containing particles (dust, etc.).



### Electrical connection:

**Caution:** this device is electric and operates under voltage. Any work on the system (pressure switch, circuit breaker, motor, and cord) must be performed with the power turned off.

To turn off the power, you must:

- 1) pushing down the Start/Stop button on the switch and
- 2) Disconnect the power cord (or open the disconnect switch).

The compressor must be connected to an installation with a ground connection and differential protection (against short circuits) as close as possible to the compressor outlet so that this protection is effective.

Ensure that these conditions are met and check that the contactor button is fully depressed in the off position before connecting the power supply.

### Overcurrent protection:

#### Single-phase compressor

:

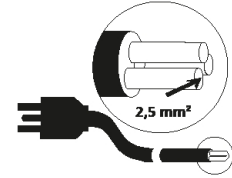
The single-phase compressor is supplied with a male electrical plug that complies with the standard.

**Caution:** it cannot be operated on a 400 V installation system.

The electrical cable has two conductive wires for the mains and one for the earth. The earth wire is yellow and green and must be connected to the earth terminal of the power outlet.

### Cord - Extension cord:

Keep the cord away from areas where it could be stepped on or crushed, away from heat sources or surfaces exceeding 70°C, and away from sharp surfaces. Clean thoroughly if it comes into contact with grease or oil, which can alter the properties of the sheath. Do not leave the cord in an acidic or corrosive environment (e.g., animal excrement).



Rallonge

If the use of an extension cord (less than 20 m long) is , only use standard electrical cables with a cross-section of at least 1.5 mm<sup>2</sup> to prevent overheating or voltage loss in the extension cord. To choose the correct cable cross-section, please refer to the table opposite.

Motor power	Cross-section Single-phase
0.5 kW /0.75 HP	1.5 mm <sup>2</sup>
0.736 kW /1 HP	1.5 mm <sup>2</sup>
1 kW /1.5 hp	1.5 mm <sup>2</sup>
1.5 kW /2 hp	1.5 mm <sup>2</sup>
2.2 kW /3 hp	2.5 mm <sup>2</sup>
3 kW /4 hp	2.5 mm <sup>2</sup>

Always unroll the extension cord completely. In general, it is better to have a longer compressed air hose (25 or 50 m) than an installation based on extension cords.

Always turn off your compressor using the switch (by pushing it down) and only then unplug it, without pulling sharply on the cord.

### Pneumatic connections:

Always use compressed air pipes or hoses with pressure characteristics that are suitable for the compressor (50% higher than the maximum pressure of the compressor).

Never use the compressor without connecting it to a tool or its destination system to prevent uncontrolled air release.



## OPERATION

- Never use the compressor for purposes other than those specified by your dealer at the time of purchase.
- Specific uses may require compliance with standards that you are responsible for knowing and complying with (inflation, washing with detergents, painting, etc.). In particular, do not use the compressor with any fluid other than compressed air.
- Regardless of the type of compressor used, the air expelled cannot be completely pure.
- If your system and/or use requires a higher degree of purity, be sure to install the appropriate filter devices, available from your dealer. In particular, the compressed air produced by this device is not suitable for medical, food, or respiratory use.
- Never direct the jet towards a person or animal. Do not allow anyone who has not been trained in the use of the Peugeot Outils Professionnels compressor to operate it, especially children. Keep them away from the work area while working with the compressor.
- Do not use the compressor while barefoot and/or wet, or with wet hands.
- Never operate the compressor without the flywheel-belt guard securely in place and without the protective covers on the pressure switch and circuit breaker switch closed.

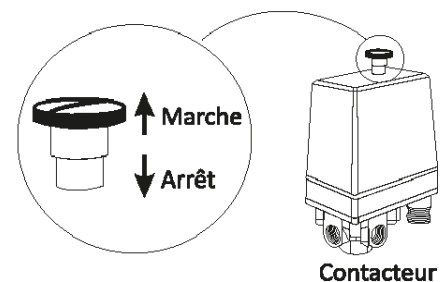
### Start-Stop:

To start the compressor, plug in the power cord (or close the disconnect switch), then pull up the on/off button on the pressure switch.

When the compressor starts, the tank gradually fills with air and the pressure increases. When it reaches a shut-off pressure (factory set at 8 bar), the pressure switch automatically stops the compressor.

When air is consumed, the pressure in the tank drops to the restart pressure (factory set between 5 and 6 bar). When this pressure is reached, the pressure switch automatically restarts the compressor.

To stop the compressor (possible at any time), push down the on/off button on the pressure switch. To turn off the power or for a prolonged shutdown, be sure to unplug the power cord (or open the disconnect switch).



Any work on the compressor requires disconnecting the power cord (or opening the disconnect switch). Set the contactor to the off position and disconnect the power cord:

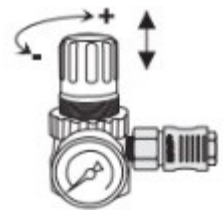
- to protect it against power surges in the event of a lightning strike.
- if you want to avoid unexpected restarts a few hours later, when the tank pressure has dropped...
- in case of prolonged non-use.

### Adapting to the tool – adjusting the working pressure:

To operate an accessory, you need a constant working pressure (indicated in the tool manual).

You must set the compressor outlet pressure to the same level. The adjustment is made at the pressure regulator.

Turn the (red) cap on the pressure regulator clockwise to increase the pressure, and anticlockwise to decrease it. Check the pressure on the pressure gauge. When the desired pressure is reached, lock the cap using its (red) locking ring.



**NB:** Check that the regulator setting pressure is always lower than the pressure at which the pressure gauge switch restarts. Otherwise, you will not obtain the desired pressure.

Do not use a tool whose consumption exceeds the maximum flow rate delivered by the compressor by more than 50%. Doing so will cause premature wear of the compressor.

**NB:** If the compressor is not fitted as standard, you can add one. Contact an authorized service center.



### Noise precautions:

The compressor is a noisy device. Use noise protection to protect yourself from hearing damage. Noise from equipment used outdoors in accordance with Directive OUTDOOR 200/14/EC - Procedure: Annex VIII

Guaranteed sound power level: LWA 81 dB(A) Measured  
sound power level: LWA 76 dB(A) Measured sound pressure  
level: LPA 55 dB(A)

You are responsible for complying with the noise levels permitted at the place of use of the compressor.



Eye protection:

Air and particle projections can be dangerous to the eyes. Protective eyewear must be worn for safe use.

Never point tools, hoses, etc. towards people or animals.



Risk of burns:

Certain parts of your compressor, in particular the cylinder, cooling fins, discharge pipe, copper extension, and non-return valve, can reach temperatures that will cause burns on contact with the skin.

Be sure not to touch them until they have cooled sufficiently.

Do not leave flammable materials or nylon fabrics near or in contact with the compressor.

## MAINTENANCE

**Caution:** Strict adherence to maintenance measures will keep your compressor in good working order. Proper maintenance is also essential for safety, particularly regular and frequent purging of the tank.

For your safety, any movement of the compressor or maintenance operation must be carried out when the compressor is stopped, disconnected from the power supply, and with the tank empty. The compressor can be moved on its wheels using the handle provided for this purpose.

Draining the tank:

Condensation in the tank is inherent to the normal operation of the compressor. It is therefore essential to drain the tank as frequently as possible and at least once a week to prevent corrosion. In the event of severe corrosion, the tank could crack under pressure and endanger people and property. Draining is carried out by depressurizing the tank and draining any condensate that may be present.

**Drainage:**      Open the drain valve located under the tank.  
                       Collect condensate, preventing it from dispersing into the environment.  
                       Ensure that it is treated/recycled/disposed of by the competent authority.  
                       Tighten the nut securely after the operation.



Always check that the tank is empty before unscrewing the drain valve. Never attempt to unscrew it if the tank is still under pressure.

High-pressure air flow can be dangerous: never stand in front of the flow. Never direct the flow towards a person or animal.

Always connect the compressor to an air-consuming tool before use to prevent uncontrolled air release.

Periodically, after draining and before closing the drain valve, check that the drain system is working properly: restart the compressor and make sure that air is coming out of the drain valve. Then turn off the device and close the screw before putting the compressor back under pressure.

Your tank complies with current regulations. Never tamper with it in any way (welding, etc.). Have the condition of the tank checked by a professional in the event of an impact.



In accordance with current French regulations, the compressor tank must be inspected by a testing organization (APAVE, Véritas, etc.) every 4 years at most and requalified (pressure resistance test) by such an organization every 10 years.

Condensate treatment: do not release condensate consisting of water and plastic particles into the environment. It must be collected by a reprocessing organization.

Air filter:

A dirty filter reduces the performance of the device. Clean the air filter cartridge frequently using an air gun (always blow from the inside out), at least every 50 hours.

Do not use flammable products for cleaning. If it is too dirty, replace the filter or its filter element (cartridge).

Safety valve:

Do not touch the valve. Its setting and operation must not be altered. Ensure that it is working correctly in accordance with the specific instructions supplied with the compressor.

Valves:

Compressor malfunctions are often caused by particles blocking the valves on the "valve plates" located in the compressor head and/or the check valve mounted on the tank. These valves are easily accessible and simple cleaning will ensure that the compressor works properly. Contact an authorized service center.



The check valve must be removed when the tank is empty.

Risks associated with freezing:

If the compressor has been exposed to freezing temperatures, store it for a while in a warm place or heat the pipes to melt any ice that may have formed from condensation. Drain the tank every evening and restart in the morning with the tank empty.

## POSSIBLE CAUSES OF MALFUNCTION

The compressor does not start:

- The tank is full.
- The switch button is not in the on position and/or the compressor is not plugged in.
- Voltage too low at the motor terminals: extension cord too long or insufficient mains voltage.

The appliance "grumbles" but does not start:

The mains voltage is too low.

Insufficient flow rate:

All of the following procedures must be carried out with the power off, when the unit is cold and the tank is empty.

- Leak in the pipe connecting the unit to the tank: loosen the pipe nuts without removing the pipe, reposition the pipe, and tighten the nuts securely.
- Clogged air filter: blow it out or replace it.
- Compressor head valves clogged or worn: remove the head (cylinder head + valve plate) and clean or replace the valves.

**Caution:** Any disassembly of the head requires replacement of the seals.

- Permanent leak at the contactor when the compressor stops: the check valve is damaged: clean or replace the special rubber disc after unscrewing the check valve head.

**Caution:** Always switch off the compressor and empty the tank beforehand to avoid accidents.

### Compressor unit blocked:

- Damaged bearings or connecting rod bearings: contact Peugeot Professional Tools customer service.
- Cylinder and/or piston ring(s) damaged: contact Peugeot Professional Tools customer service.
- Connecting rod stuck on the crankshaft: contact Peugeot Professional Tools customer service.

### Excess water in the expelled air:

This condensation is normal and is due to the expansion of the compressed air. If your application requires the expulsion of particularly dry air, we recommend purchasing an air dryer (contact your dealer).

### When your compressor trips:

- Turn off the compressor at the contactor.
- Wait for it to cool down before restarting it.
- Then restart the compressor at the contactor. If it trips several times in a row, contact an authorized service center.

If you are using an extension cord, check that the cable cross-section is sufficient.

Recommended extension cord: 3 x 1.5 mm<sup>2</sup>, maximum length 20 m.



***Warning:*** Any other operation requires the intervention of a Peugeot Professional Tools authorized service center.

Any work carried out outside this framework and without new Peugeot Professional Tools parts will void the product warranty.



## Warranty

If the machine is covered by warranty, repairs must be carried out exclusively by an authorized after-sales service center.

The machine warranty is valid for 2 years from the date of purchase by the user. This product benefits from an additional 2-year warranty extension, provided that the user registers the product on the PEUGEOT OUTILS PROFESSIONNELS website ([www. peugeot.outils-pro.com](http://www.peugeot.outils-pro.com)) within 30 days of the date of purchase. This extended warranty is subject to the same conditions as the initial warranty.

Accessories and consumables are not covered by the warranty.

It is important to keep the invoice, which serves as the warranty certificate.

The warranty is limited to the repair or replacement of defective parts free of charge, after evaluation by the manufacturer.

For any requests for information or spare parts relating to the machine, it is essential to provide the exact information shown on the nameplate.

The warranty does not cover damage caused by the user or by a repairer not approved by Tivoly.



Link to the General Warranty Terms and Conditions:



## DECLARATION OF "ORIGINAL" CONFORMITY

The undersigned (Manufacturer/Importer):

TIVOLY  
266 ROUTE PORTES DE TARENTEISE 73790 TOURS-EN-SAVOIE

Declares that the following new machine:

Designation: PISTON COMPRESSOR  
Brand: PEUGEOT PROFESSIONAL TOOLS  
Model: PCAP6SH6  
Reference: PPC00100011  
Serial number:

Complies with applicable harmonized legislation:

Machinery Directive 2006/42/EC (until January 19, 2027) EU  
Regulation 2023/1230 (from January 20, 2027)

Complies with the essential safety requirements applicable to it:

Low Voltage Directive 2014/35/EU  
Electromagnetic Compatibility Directive 2014/30/EU WEEE  
Directive 2012/19/EU  
RoHS-2 Directive  
2011/65/EU REACH  
1907/2006  
Noise Directive 2003/10/EC  
Vibration Directive 2002/44/EC


Done at TOURS-EN-SAVOIE

The

Stéphane Le Mounier  
Managing Director

Person authorized to compile the technical file:

M. LE MOUNIER – TIVOLY – 266 ROUTE PORTES DE TARENTEISE 73790 TOURS-EN-SAVOIE

	TIVOLY - Head office 266 ROUTE PORTES DE TARANTAISE 73790 TOURS-EN-SAVOIE	CUSTOMER SERVICE Tel +33(0)4 79 89 59 00
	In its ongoing effort to improve the quality of its products, TIVOLY reserves the right to modify their characteristics. The information, photos, exploded views, and diagrams contained in this document are not contractual.	April 2026 edition