



Get a free 2-year warranty



PISTON COMPRESSOR PCAP 50 VM 20

IN GOOD HANDS
INSTRUCTIONS MANUAL ORIGINAL

GB / SP / DE / PT





WHO ARE WE?

Peugeot Professional Tools was born out of several obvious reasons.

The first was to combine the know-how of Peugeot, which has mastered the art of cutting since 1810, with the expertise of Tivoly, a metalworker since 1917, in order to create a wide range of machines and tools for construction and maintenance professionals.

It was also an obvious choice to serve craftsmen and small businesses driven by strong family and heritage values.

For these professionals, Peugeot Outils Professionnels offers machines and tools designed specifically for their needs. Reliable, durable tools, repaired in France and in countries under distribution agreements, by local industrial and family partners.

Trusted equipment with a longer warranty, logistics, and after-sales service.

French after-sales service. The assurance of dealing with the people who assembled these tools and know every part that goes into them inside out.

From exceptional projects to everyday jobs, these tools are designed to withstand the most demanding conditions and stand the test of time.

Peugeot Professional Tools was born from one obvious fact: that our tools are in good hands. The hands of those who work behind the scenes and give their best to satisfy their customers.

Since 1810, many things have changed, but the hands have remained the same. The hands of enthusiasts, craftsmen, dedicated technicians and installers, workers who are proud of themselves and their achievements.

Peugeot Professional Tools, tools in good hands.

THANK YOU FOR YOUR PURCHASE.

We are delighted that you have chosen Peugeot Outils Professional. Each one has been designed to offer you an exceptional experience, and we hope you will enjoy using it as much as we have enjoyed creating for you.

Your trust is essential to us, and we are delighted to accompany you every step of the way in your experience with the Peugeot Outils Professionnels brand.

Your purchase comes with a warranty. 2 years, extendable by 2 years upon request.

To benefit, register at www.peugeot-outils-pro.com

If you have any questions or need assistance, our team is at your disposal to offer you the best possible service.

For all inquiries regarding our sales department, after-sales service, please call the number + 33(O) 4. 79. B9. 59. 00

Thank you for choosing Peugeot Outils Professional. Your satisfaction is our priority.

is our priority.



AIR COMPRESSOR TWO-CYLINDER V-TYPE SINGLE-STAGE OIL-FREE



PCAP50MV2 0

Ref.: PPC00100009

Equipment:

- Pressure regulator manifold with
- 2 quick-connect outlets, 1 of which is regulated.
- 0-12 bar pressure gauge.
- Regulated pressure gauge 0-12 bar.
- Pressure gauge switch
- Start assist valve
- 16 bar pressure gauge
- Check valve, safety valve, drain valve
- Copper piping
- Solid wheels \varnothing 175 mm

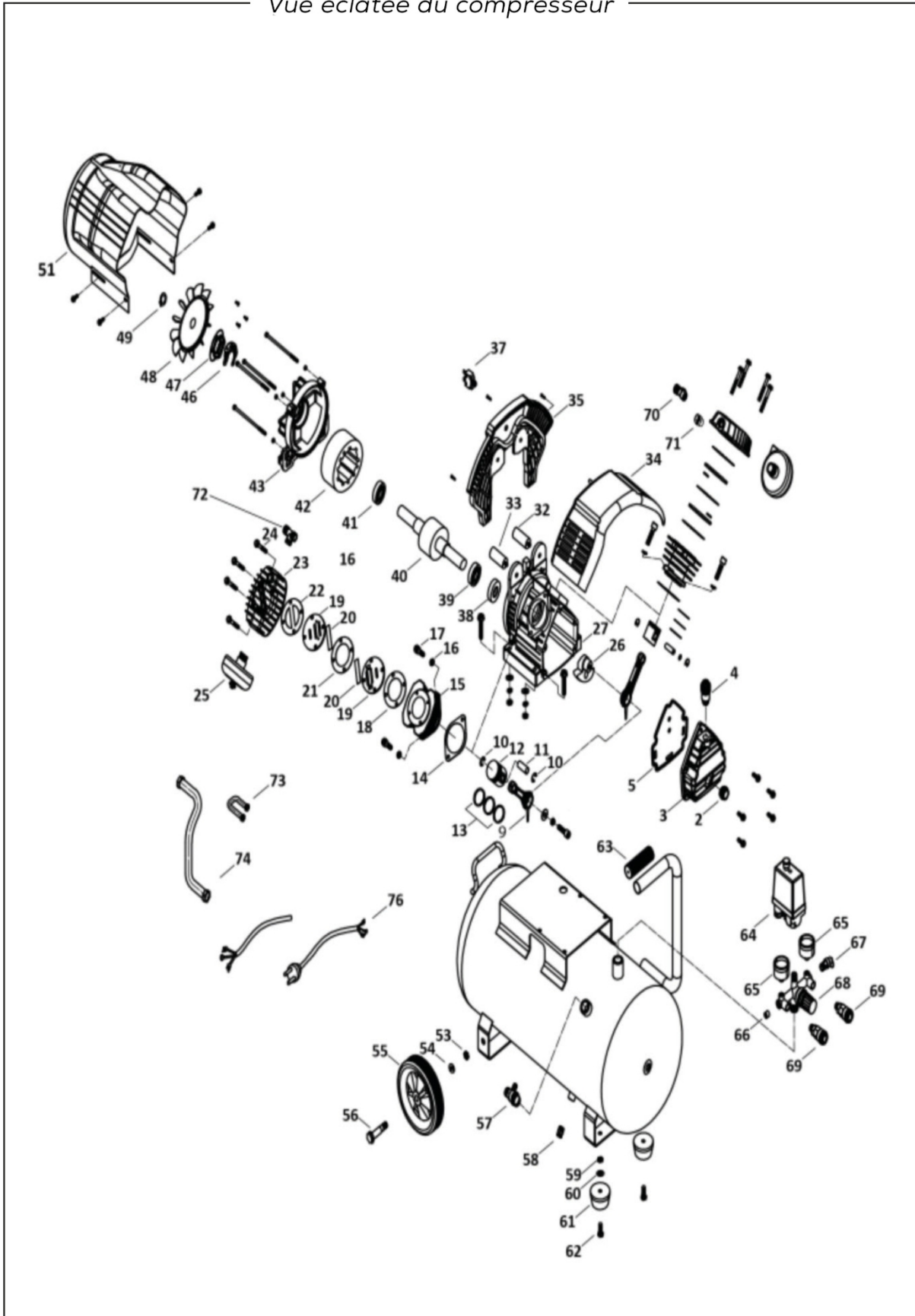
Features:

Suction flow rate	20 m ³ /h, or 335 l/min
Airflow	12.3 m ³ /h, or 205 l/min
Motor	3 HP Single-phase
Tank	50 liters
Pressure	8 bar max
Dimensions in cm	70 x 43 x 64
Weight	38.8 kg
Noise level	97 dB (A)

You have just purchased a Peugeot Outils Professionnels air compressor, and we thank you for your trust.

To get the most out of your compressor in complete safety, please read this manual carefully before installing, using, or servicing it.

Vue éclatée du compresseur



<i>Repère</i>	<i>Désignation</i>	<i>Quantité</i>	<i>Référence</i>
2	Voyant niveau d'huile	1	25150800
3	Flasque avant	1	25150801
4	Bouchon de remplissage/reniflard	4	25150802
5	Joint flasque avant	1	25150803
9 à 13	Ensemble bielle + Piston + Segments	1	25150804
14	Joint Carter / Cylindre	2	25150805
15	Cylindre	2	25150806
16	Rondelle vis cylindre	4	
17	Vis cylindre	4	
18	Joint Cylindre / Plaque-clapet	2	25150528
18-19x2- 20x2- 21x2-22	Plaque-clapet	2	25150571
21	Joint intermédiaire	2	25150532
22	Joint plaque clapet / culasse	2	25150534
23	Culasse	2	25150538
24	Vis culasse	8	
25	Filtre à air	2	26142112
26	Vilebrequin	1	25150807
27	Carter groupe	1	25150808
32	Condensateur 40 uF	1	25150810
33	Condensateur 200 uF	1	25150811
34	Couvercle I	1	25150812
35	Couvercle II	1	25150813
37	Disjoncteur	1	25150814
38	Joint spi	1	25150815
39	Roulement	1	25150816
40	Rotor moteur	1	25150817
41	Roulement	1	

<i>Repère</i>	<i>Désignation</i>	<i>Quantité</i>	<i>Référence</i>
42	Stator moteur	1	25150818
43	Flasque arrière moteur	1	25150819
46	Disque centrifuge	1	25150820
47	Interrupteur centrifuge	1	25150821
48	Ventilateur	1	25150822
49	Circlips ventilateur	1	25150823
50	Vis couvercle III	4	
51	Couvercle III (Carénage)	1	25150824
53 à 56	Roue Ø 175 mm + axe + visserie	2	24220330
57	Clapet anti-retour	1	25150718
58	Robinet de purge	1	25160342
59 à 62	Patin + visserie	2	25150558
63	Poignée caoutchouc	1	25150560
64	Contacteur manométrique monophasé 1 sortie	1	25150722
65	Manomètre 0-12 bars - Ø 40	2	25150723
66	Bouchon de remplissage/reniflard	1	
67	Soupape de sécurité 8 bars - CE	1	25150569
68	Rampe détendeur 7 voies	1	25150724
69	Raccord Rapide 1/4" M	2	29380220
70	Coude sortie groupe	1	25150826
71	Soupape d'aide au démarrage	1	25150751
72	Té sortie groupe	1	25150825
73	Tuyau connexion culasse	1	25150826

Engine design:

V-twin, single-stage engine, Long-life components:

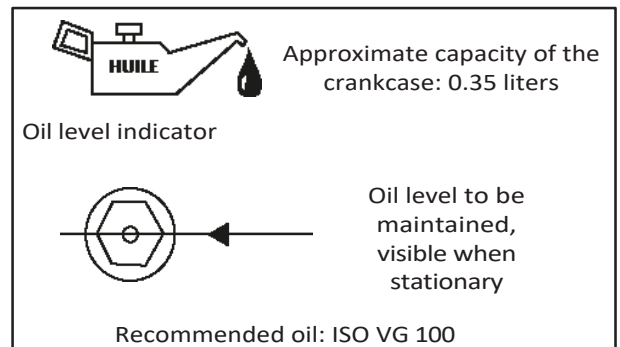
- Double valve plate: high-efficiency valves
- Triple segmentation
- Cast iron cylinders
- Aluminum cylinder heads

Low pressure drop air filters: 1 filter per cylinder

HOW TO ORDER:

Indicate the exact compressor reference number and then the part number of the part to be ordered.

Example: to order cylinder head ref. 27 Cylinder head PCAP50MV20 27





IMPORTANT PRELIMINARY INFORMATION

The legal and contractual warranty for Peugeot Professional Tools products is subject to strict compliance with this user manual.



Before using any pneumatic tool, make sure that your compressor is powerful enough for the job. Using tools that consume more than 50% of your compressor's air production capacity will cause premature wear and tear on the compressor.

Like any pressurized equipment, a compressor must be used with caution, following all start-up, operating, and maintenance instructions, as well as the safety instructions and warnings contained in this manual. It is essential to read this manual carefully before assembly and installation, use, maintenance, and in the event of minor malfunctions. Keep this manual in a safe place so that you can refer to it at any time. By identifying potentially dangerous situations in good time and following the appropriate safety instructions, the risk of accidents will be considerably reduced.

Frequent purging of the air compressor tank is necessary to limit corrosion of the tank, which could weaken it.

This equipment is intended for compressing air only, and no other gas or fluid. Never use the compressor in any way other than that specifically recommended, unless you have first ensured that the intended use will not be dangerous to yourself or others.



Modifying the design of the compressor or performing any work on the compressor beyond the operations authorized in this manual is prohibited. In such cases, the services of an authorized Peugeot Outils Professionnels service center are required.



Points de collecte sur www.quefairedemesdechets.fr
Privilégiez la réparation ou le don de votre appareil !

This product must be recycled separately from other waste. At the end of the device's life, take it to an approved Eco-Systems center (waste collection center, etc.) for recycling of its components. It is therefore your responsibility to recycle this electronic equipment waste by taking it to a designated collection point for recycling electrical and electronic equipment. The separate collection and recycling of your waste equipment at the time of disposal helps to protect natural resources and ensure recycling in a way that protects human health and the environment. For more information on recycling points for your waste equipment, please contact your local recycling service or the retailer where you originally purchased the product.

Collection point at www.quefairedemesdechets.fr

RECEPTION - INSTALLATION

Compressor environment:

The compressor must be used in a clean (dust-free) and well-ventilated environment, away from acid and flammable gases. It must be protected from water (rain, water jets, etc.).

The ambient operating temperature must be between 0 and 35°C. The humidity level must not exceed 75%. Keep the compressor in a horizontal position, in a ventilated area that facilitates the intake of air to be compressed, and at least 50 cm from a wall.

Installation:

The compressor must be placed on a stable support to limit vibrations and prevent it from falling: avoid rigidly fixing it to the floor, as this would prevent vibrations from dispersing and could cause breakage.

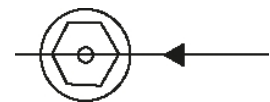
The "mobile" compressor (with wheels), delivered on a specific transport pallet or in a cardboard box, must be unpacked (and/or depalletized) and assembled with its wheels (and skids if supplied).

The compressor must be placed at least 3 meters away from the work area to avoid the risk of suctioning in air containing particles (dust, etc.).

Oil level:

Check the oil level. If it is insufficient, top up to the top of the red indicator and ensure that the compressor is installed in a horizontal position for proper lubrication.

Use compressor oil. ISO VG 100



Electrical connection:

Caution: this device is electric and operates under voltage. Any work on the system (pressure switch, circuit breaker, motor, and cord) must be carried out with the power turned off.

To disconnect the power supply:

- 1) pressing the Start/Stop button on the switch down
- 2) unplugging the power cord (or opening the disconnect switch).

The compressor must be connected to an installation with a ground connection

and differential protection (against short circuits) as close as possible to the compressor plug so that this protection is effective.

Ensure that these conditions are met and check that the switch button is fully depressed in the off position before connecting the power supply.

Overcurrent protection:

Single-phase compressor:

Single-phase compressors are supplied with a standard male electrical plug.

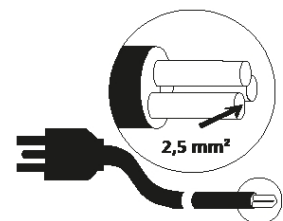
Your compressor is equipped with an electric motor and appropriate overcurrent protection, with factory settings that must not be modified. The alarm can be acknowledged by pressing the button on the motor contact box.

Please note: these compressors cannot be operated on a 400 V installation.

The electrical cable has two conductive wires for the mains and one for the earth. The earth wire is yellow and green and must be connected to the earth terminal of the power outlet.

Cord - Extension cord:

Keep the cord away from areas where it could be stepped on or crushed, away from heat sources or surfaces exceeding 70°C, and away from sharp surfaces. Clean thoroughly if it comes into contact with grease or oil, which can alter the properties of the sheath. Do not leave the cord in an acidic or corrosive environment (e.g., animal excrement).



Rallonge

If an extension cord (less than 20 m long) is necessary, use only standard electrical cables with a cross-section of at least 2.5 mm² to prevent overheating or voltage loss in the extension cord. To choose the correct cable cross-section, please refer to the table opposite

Motor power	Cross-section Single-phase
0.736 kW/1 HP	1.5 mm ²
1 kW/1.5 HP	1.5 mm ²
1.5 kW/2 HP	1.5 mm ²
2.2 kW/3 HP	2.5 mm ²
3 kW/4 HP	2.5 mm ²

Always unroll the extension cord completely. In general, it is better to have a longer compressed air hose (25 or 50 m) than an installation based on electrical extension cords.

Always turn off your compressor by pressing the switch (pushing it down) and only then unplug it, without pulling sharply on the cord.

Pneumatic connections:

Always use compressed air pipes or hoses with pressure characteristics that are compatible with those of the compressor (50% higher than the maximum pressure of the compressor).

Never use the compressor without connecting it to a tool or its destination system to prevent uncontrolled air release.



OPERATION

- Never use the compressor for purposes other than those specified by your dealer at the time of purchase.
Specific uses may require compliance with standards that you are responsible for knowing and complying with (inflation, washing with detergents, painting, etc.). In particular, do not use the compressor with any fluid other than compressed air.
- Regardless of the type of compressor used, the air expelled cannot be completely pure.
If your system and/or use requires a higher degree of purity, be sure to install the appropriate filtering devices, available from your dealer. In particular, the compressed air produced by this device is not suitable for medical, food, or respiratory use.
- Never direct the jet towards a person or animal. Do not allow anyone who is not trained in the use of the Peugeot Outils Professionnels compressor to operate it, especially children.
Keep them away from the work area while working with the compressor.
- Do not operate the compressor while barefoot and/or with wet feet, or with wet hands.
- Never operate the compressor without the flywheel-belt guard securely in place and without the protective covers on the pressure switch and circuit breaker.

circuit breaker closed.

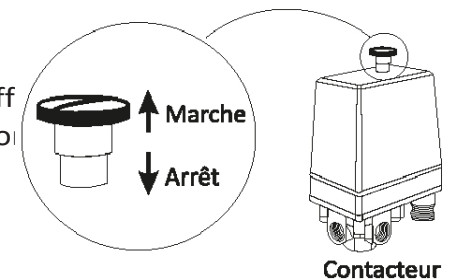
Start-Stop:

To start the compressor, plug in the power cord (or close the disconnect switch), then pull up the on/off button on the pressure switch.

When the compressor starts, the tank gradually fills with air and the pressure increases. When it reaches a shut-off pressure (factory set at 8 bar), the pressure switch automatically stops the compressor.

When air is consumed, the pressure in the tank drops to the restart pressure (factory set between 5 and 6 bar). When this pressure is reached, the pressure switch automatically restarts the compressor.

To stop the compressor (possible at any time), push down the on/off button on the pressure switch. To disconnect the power supply or for a prolonged shutdown, be sure to unplug the power cord (or open the disconnect switch).



Any work on the compressor requires the power cord to be unplugged (or the isolator switch to be opened). Set the switch to the off position and unplug the power cord:

- to protect it against power surges in the event of a "power surge" ⚡
- if you want to avoid unexpected restarts a few hours later when the tank pressure has dropped...
- in case of prolonged disuse.

Initial start-up and running-in:

The units undergo testing and a pre-running-in period at the factory.

The compressor continues its running-in period for approximately 15 hours of use, without any specific intervention by the user.

Drain and replace with new oil.

Adapting to the tool – adjusting the working pressure:

To operate an accessory, you need a constant working pressure (indicated in the tool manual).

You must set the compressor outlet pressure to the same level.

The adjustment is made at the pressure regulator.

Turn the (red) cap on the pressure regulator clockwise to increase the pressure and counterclockwise to decrease it.

Check the pressure on the pressure gauge. When the desired pressure is reached, lock the cap using its locking ring (red).

NB: Check that the regulator setting pressure is always lower than the pressure at which the pressure gauge switch restarts. Otherwise, you will not obtain the desired pressure.



Pressure regulator

Do not use a tool whose consumption exceeds the maximum flow rate delivered by the compressor. Doing so would cause premature wear on the compressor.

NB: If the compressor is not fitted as standard, you can add one.

Contact an authorized service center. Peugeot Professional Tools.



Noise precautions:

The compressor is a noisy device. Use ear protection to protect yourself from hearing damage.

The acoustic power of this device is indicated on page 1.

It is your responsibility to comply with the noise levels permitted at the place where the compressor is used.



Eye precautions:

Air and particle projections can be dangerous to the eyes. Protective eyewear must be worn for safe use. Never point tools, hoses, etc. toward people or animals.



Risk of burns:

Certain parts of your compressor, in particular the cylinders, cooling fins, discharge pipe, copper extension, and non-return valve, can reach temperatures that will cause burns on contact with the skin.

Be sure not to touch them until they have cooled sufficiently.

Do not leave flammable materials or nylon fabrics near or in contact with the compressor.

MAINTENANCE

Caution: Strict adherence to maintenance measures will keep your compressor in good working order. Proper maintenance is also essential for safety, including regular and frequent purging of the tank.

For your safety, any movement of the compressor or maintenance operation must be carried out when the compressor is stopped, disconnected from the power supply, and with the tank empty. The compressor can be moved on its wheels using the handle provided for this purpose.

Draining the tank:

Condensation in the tank is inherent to normal compressor operation. It is therefore essential to drain the tank as frequently as possible, and at least once a week, to prevent corrosion. In the event of severe corrosion, the tank could crack under pressure and endanger people and property. Purging is performed by depressurizing the tank and draining any condensate that may be present.

Drainage: Unscrew the drain valve located under the tank.

Collect the condensate, taking care to prevent it from dispersing into the environment. Ensure that it is treated/recycled/disposed of by the appropriate authority. Tighten the nut securely after the operation.



Always check that the tank is empty before unscrewing the drain valve. Never attempt to unscrew it if the tank is still under pressure.

High-pressure air flow can be dangerous: never stand in front of the flow. Never direct the flow towards a person or animal.

Always connect the compressor to an air-consuming tool before use



to prevent uncontrolled air release.

Periodically, after draining and before tightening the nut, check that the drain system is working properly: restart the compressor and make sure that air is coming out of the drain screw (nut). Then turn off the device and close the screw before putting the compressor back under pressure.

Your tank complies with current regulations. Never tamper with it in any way (welding, etc.). Have the condition of the tank checked by a professional in the event of an impact.



In accordance with current French regulations, the compressor tank must be inspected by a testing organization (APAVE, Véritas, etc.) every 4 years at most and requalified (pressure resistance test) by such an organization every 10 years.

Condensate treatment: do not release condensate consisting of water and oil into the environment. It must be collected by a reprocessing organization.

Draining:

- It is strongly recommended that you check the oil level regularly.
- Use compressor oil. ISO VG 100 Do not fill the tank above the red level: this would result in excessive oil supply to the system.
- Perform an initial drain at the end of the break-in period (15 hours of operation).
- Then drain and flush the crankcase every year or every 150 hours of operation.
- Intensive use of the compressor may result in excessive oil consumption. In this case, check the oil level regularly. It is recommended to avoid mixing different types of oil.

To drain the unit

Using a flat wrench, unscrew and remove the drain plug at the bottom of the front flange. Tilt the compressor forward and let the used oil drain out.

Once the used oil has been drained from the crankcase, check the condition of the plug seal, then replace the drain plug (screw it in tightly).

For the amount of oil in the crankcase, refer to the unit's exploded view.

Unscrew the filler cap, slowly pour in the oil, and adjust the amount of oil to reach the correct level in the middle of the sight glass.

Replace the filler cap.

Air filter:

A dirty filter reduces the performance of the device. Clean the air filter cartridge frequently

air filter cartridge with an air gun (always blow from the inside out), at least every 50 hours. Do not use flammable products for cleaning. If it is too dirty, replace the filter.

Safety valve:

Do not touch the valve. Its setting and operation must not be altered. Ensure that it is working correctly in accordance with the specific instructions supplied with the compressor.

Valves:

Compressor malfunctions are often caused by particles blocking the valves on the "valve plates" located in the compressor head and/or the check valve mounted on the tank. These valves are easily accessible and simple cleaning will ensure that the compressor works properly. Contact an authorized after-sales service center. Peugeot Professional Tools.



The check valve must be removed when the tank is empty.

Risks associated with freezing:

If the compressor has been exposed to freezing temperatures, store it for a while in a warm place or heat the pipes to melt any ice that may have formed from condensation. Drain the tank every evening and restart in the morning with the tank empty.

POSSIBLE CAUSES OF MALFUNCTION

The compressor does not start:

- The tank is full
- The switch button is not in the on position and/or the compressor is not plugged in.
- Voltage too low at the motor terminals, extension cord too long, or insufficient mains voltage.

The appliance "growls" but does not start:

The mains voltage is too low.



Insufficient flow:

All of the following procedures must be carried out with the power off, when the unit is cold and the tank is empty.

- Leak in the pipe connecting the unit to the tank: loosen the pipe nuts without removing the pipe, reposition the pipe, and tighten the nuts securely.
- Loose belt, slipping: after turning off the compressor, remove the cover protecting the belt and flywheel, remove the belt, unscrew the motor from the plate, move the motor away from the unit by a few millimeters, tighten the motor onto its plate, and reinstall the belt. Be sure to reinstall the protective cover before restarting.
- Clogged filter: blow it out or replace it.
- Compressor head valves clogged or worn: remove the head (cylinder head + valve plate) and clean or replace the valves.

Caution: Any disassembly of the head requires replacement of the seals.

- Permanent leak at the contactor when the compressor stops: the check valve is damaged : clean or replace the special rubber disc after unscrewing the check valve head.

Caution: Always switch off the compressor and empty the tank beforehand to avoid accidents

Oil is leaking:

- Worn or damaged segments. Contact Peugeot Professional Tools Customer Service.
- Damaged cylinder. Contact Peugeot Professional Tools Customer Service.
- At the cylinder heads: replace the cylinder head gaskets according to the operating procedure.

Compressor unit blocked:

- Damaged connecting rod bearings or bushings: contact Peugeot Professional Tools Customer Service.
- Damaged cylinder and/or piston ring(s): contact Peugeot Professional Tools Customer Service.
- Connecting rod stuck on the crankshaft: contact Peugeot Professional Tools Customer Service.
- Damaged cylinders and piston rings, as well as a seized connecting rod, are generally the result of a lack of oil.



Excess water in the expelled air:

This condensation is normal and is due to the expansion of the compressed air. If your application requires the expulsion of particularly dry air, we recommend purchasing an air dryer (contact your dealer).

When your compressor trips:

- "Stop" the compressor at the contactor.
- Wait for it to cool down before restarting it.
- After a few minutes, press the circuit breaker reset button located on the motor or in the contactor box.
- Then restart the compressor at the contactor. If it trips several times in a row, contact an authorized service center. Peugeot Professional Tools.

If you are using an extension cord, check that the cable cross-section is sufficient.

Recommended extension cord: 3 x 2.5 mm², maximum length 20 m.



Please note: Any other operation requires the intervention of Peugeot Professional Tools service centers. Any intervention carried out outside this framework and without new Peugeot Professional Tools parts will void the product warranty.



Warranty

If the machine is covered by warranty, it must be serviced exclusively by an authorized after-sales service center.

The machine warranty is valid for 2 years from the date of purchase by the user. This product benefits from an additional 2-year warranty extension, provided that the user registers the product on the PEUGEOT OUTILS PROFESSIONNELS website ([www. peugeot.outils-pro.com](http://www.peugeot.outils-pro.com)) within 30 days of the date of purchase. This extended warranty is subject to the same conditions as the initial warranty.

Accessories and consumables are not covered by the warranty.

It is important to keep the invoice, which serves as a warranty certificate.

The warranty is limited to the repair or replacement of defective parts free of charge, after evaluation by the manufacturer.

For any requests for information or spare parts relating to the machine, it is essential to provide the exact information shown on the nameplate.

The warranty does not cover damage caused by the user or by a repairer not approved by Tivoly.

Link to the General Warranty Terms and Conditions:





DECLARATION OF "ORIGINAL" CONFORMITY

The undersigned (Manufacturer/Importer):

TIVOLY
266 ROUTE PORTES DE TARENTEISE 73790 TOURS-EN-SAVOIE

Declares that the following new machine:

Designation: PISTON COMPRESSOR
Brand: PEUGEOT PROFESSIONAL TOOLS
Model: PCAP50VM20
Reference: PPC00100009
Serial number:

Complies with applicable harmonized legislation:

NF EN ISO 12100 Safety of machinery - General principles for design - Risk assessment and risk reduction (November 2010),
NF EN 1012-1 Compressors and vacuum pumps: Safety requirements (December 2010).


Complies with the essential safety requirements applicable to it:

Machinery Directive (2006/42/EC), Low
Voltage Directive (2014/35/EU)
Directive on simple pressure vessels (2014/29/EU),
Electromagnetic Compatibility Directive (2014/30/EU), OUTDOOR
Acoustics Directive (2000/14/EC),
Motor Eco-design Directive 640/2009, ROHS2
2011/65/EU

Done at TOURS-EN-SAVOIE

The

Stéphane Le Mounier
Managing Director

	<p>TIVOLY - Head Office 266 ROUTE PORTES DE TARENTEISE 73790 TOURS-EN-SAVOIE</p>	<p>USER SERVICE Tel +33(0)4 79 89 59 00</p>
	<p>In its ongoing effort to improve the quality of its products, TIVOLY reserves the right to modify their characteristics. The information, photos, exploded views, and diagrams contained in this document are not contractual.</p>	<p>April 2026 edition</p>